

# Devizes Wharf Trail

## Kennet & Avon Canal



### Start outside the Museum

It's 1898. You are the honest and hardworking **wharfinger** in charge of Devizes Wharf. BUT is everyone as honest as you?

### Activity


You are a very important person. All the forms and notices have your name at the top. Write your name in the space at the top.

Valuable goods are stored on Devizes Wharf so there's a bit of thieving!

I'm paid more than anyone else on the wharf. I live in a big house too!



..... Wharfinger  
**DEVIZES WHARF COUCH LANE**



Regular barges to  
**NEWBURY BATH BRISTOL LONDON**

Loaded at	Bound for	Cargo

Devizes Wharf in 1900.



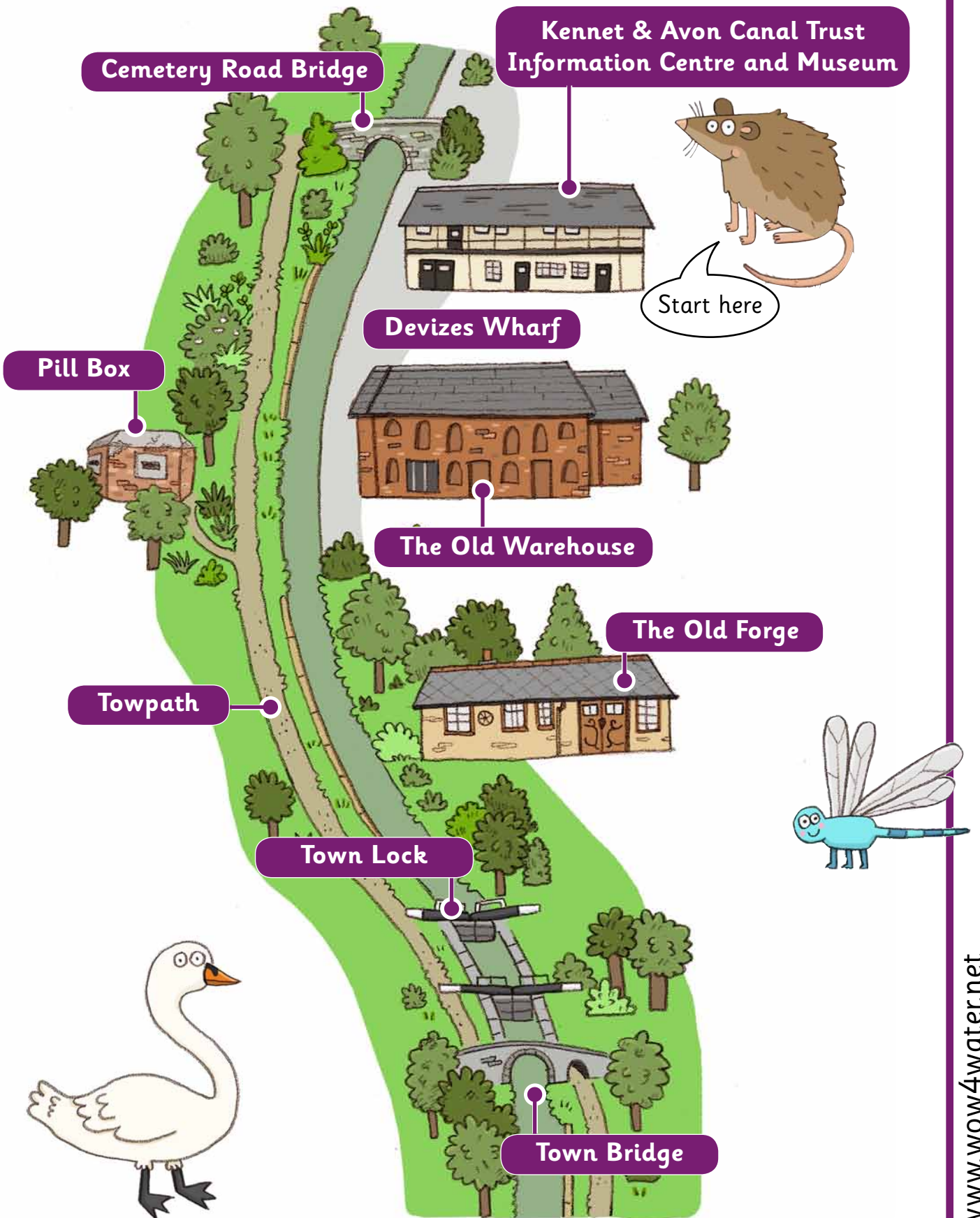
This was where canal boats loaded and unloaded goods. In Victorian times it was very busy, noisy and dirty with heaps of coal, timber and building materials around. On market days, passengers arriving by boat got off here too.

### Activity

Boaters pay tolls (money) to use the canal. You keep a sneaky eye on who is using the wharf – and the toll keeper who collects the money!

How many boats can you spot?  
 I can spot ....

# Map of Devizes Wharf Trail



Always remember to stay **SAFE** near water – **Stay Away From Edge**

## Look

### Go into the Museum

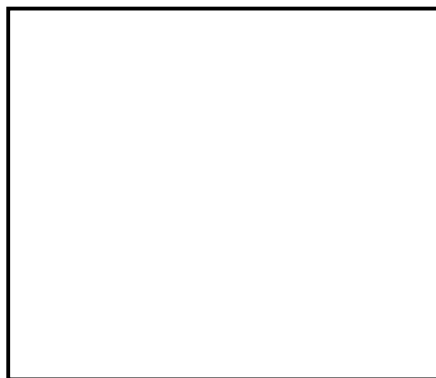
This building was once a bonded warehouse. This means valuable goods such as wine, tobacco and tea were stored here. The goods came from abroad by sea to Bristol and London. Then, they were transferred on to canal boats and delivered to Devizes Wharf.

... for a tea chest.  
Where does the tea come from?  
This tea comes from ...

## Activity

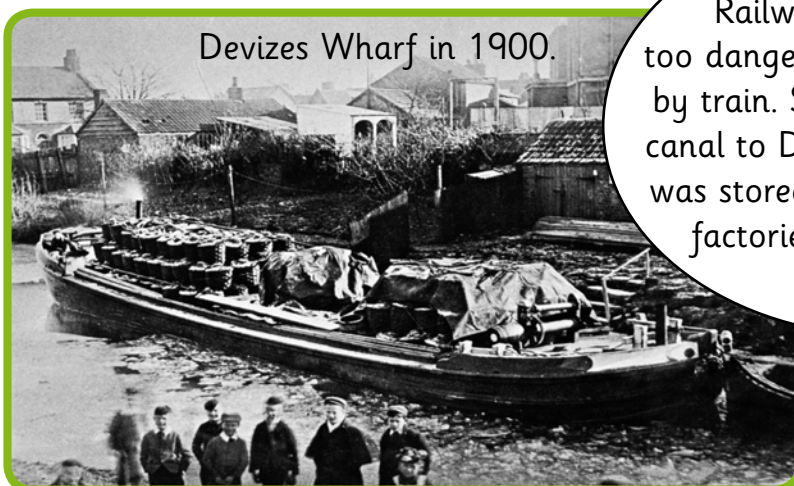
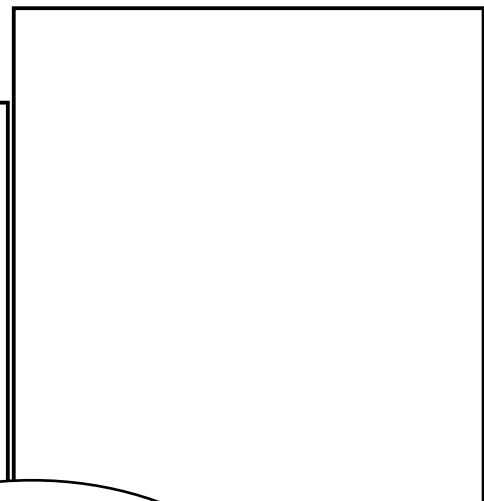
You must make sure valuable goods are stored in the right way.

Can you find something to store wine in?  
Draw it here.



Acid was stored in glass bottles called carboys.  
Find one and draw it here.

What is the best thing to store grain in?  
Draw it here.



Devizes Wharf in 1900.

Great Western Railways said acid was too dangerous to be transported by train. So it was delivered by canal to Devizes Wharf where it was stored until it was taken to factories making fertilizers and cloth.



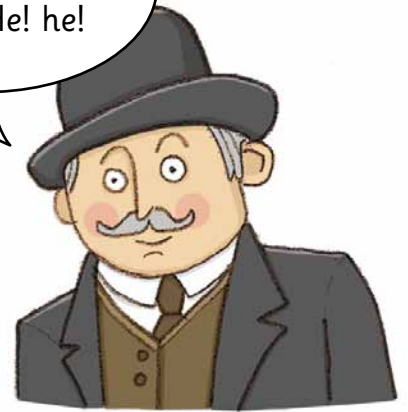
Can you spot the carboys loaded on this canal boat?


# Look

... up to the ceiling. Can you spot iron bars between the rafters? They were put there so that thieves outside couldn't remove the roof tiles and steal the goods!





We stack the goods just out of reach! He! he!




HIDE IN WHARF UNTIL  . CREEP OUT

ROUND TO BACK OF  . CLIMB ON TO

ROOF WITH  . TAKE OFF SOME 

LOWER ROPE AND HOOK THROUGH GAP IN

RAFTERS. LIFT OUT  . THROW LADDER,

ROPE AND HOOK INTO  . RUN!

# Activity

A thief has dropped his cunning plan to steal a crate of tea from the warehouse. Crack the code and find out how he plans to do it!

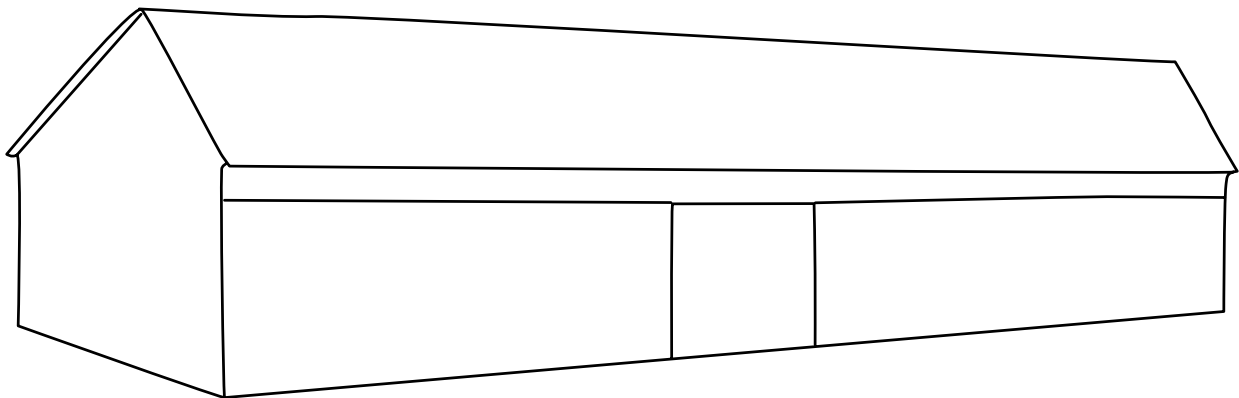
Answers on page 6

# Activity

How will you make the warehouse more secure? Here are a few ideas:

- 1 Get some very fierce dogs
- 2 Fix iron bars on the roof outside
- 3 Set traps

Draw your solution on this plan.



**Go outside and walk round to the back of the Museum**

Look for the doors where goods were loaded into the warehouse.



Be careful!  
Watch out for cars!

**Cross over Cemetery Road Bridge and walk down the towpath**

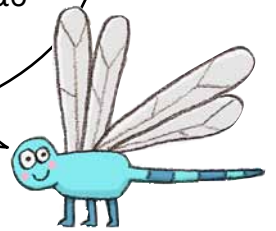
One of your jobs is to make sure the bridge, lock and towpath around Devizes Wharf are in good order.

**Activity**

Now you must check that the towpath from Devizes Wharf to Town Bridge is in good repair. Can you spot:

	YES	NO
Weeds?	<input type="checkbox"/>	<input type="checkbox"/>
Rubbish?	<input type="checkbox"/>	<input type="checkbox"/>
Potholes?	<input type="checkbox"/>	<input type="checkbox"/>
Stray animals?	<input type="checkbox"/>	<input type="checkbox"/>

Stop by the Old Warehouse. Can you see the remains of the old crane near the roof. Cheese, flour and grain were stored here. Why do you think these goods were stored inside?



I think ...

Answers page 6

**Activity**



During the Second World War people thought the enemy would invade the country. Mini forts called Pill Boxes were built at road junctions, canals, bridges and other important places. Machine guns and anti-tank weapons were stored inside.

What is it made of?  
It is made of ...

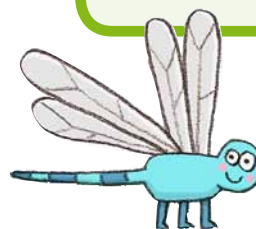
Why do think this material was used?  
I think it was used because ...

Answers on page 6

**Carry on down to Town Lock**

Is the lock in good order?  
Check off these things:

- Balance beams to push the lock gates open
- Heel grips to make pushing the balance beams easier
- Wooden lock gates



Don't go too close to the edge of the lock!

# Activity

**Walk back along the towpath. Look at the map on page 2 and stop opposite the Old Forge**

This building was the stable where the horses towing the canal boats were fed, watered, groomed and rested.

A blacksmith made horseshoes to protect horses' hooves here too.



The canal attracts lots of wildlife especially water birds. As you walk back count how many of these birds you can see.

- Swan
- Coot
- Moorhen
- Mallard

## Now find out if you are a good wharfinger!

- 1 Are you 100% honest?
- 2 Are you good at spotting sneaky things?
- 3 Would you be good at catching thieves?
- 4 Do you like working outside in all weathers?
- 5 Do you like hard work?

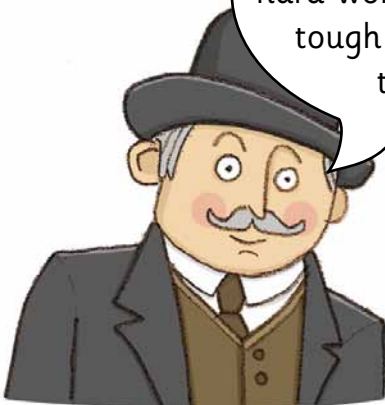
YES	NO
<input type="checkbox"/>	<input type="checkbox"/>
<input type="checkbox"/>	<input type="checkbox"/>
<input type="checkbox"/>	<input type="checkbox"/>
<input type="checkbox"/>	<input type="checkbox"/>
<input type="checkbox"/>	<input type="checkbox"/>

TOTAL

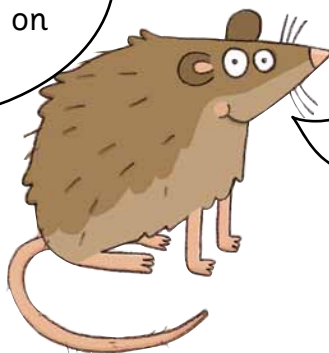
What's the score?

Add up the number of 'yes answers':  
 5: You are a brilliant wharfinger! 4-3 Not too bad; 2-1: Rubbish! You'd better look for another job.

I'm lucky to have a good job. It's hard work but not half as tough as working on the boats!



If you've enjoyed this trail why not do the Caen Hill Locks Trail or the Bath Locks Trail? Log on to **wow4water.net** and find lots of other fun things to do with canals!



Answers: Page 4: Hide in the wharf until dark. Creep out round the back of the warehouse. Climb on to the roof with a ladder. Take off some roof tiles. Lower rope and hook through gap in rafters. Lift out crate. Throw ladder rope and hook into canal. Run! PS: The Pill Box is made of concrete. It was used because it was quick, easy and cheap to make. Cheese, flour and grain was stored inside the warehouse so that it wouldn't be damaged by the weather or attract rats.