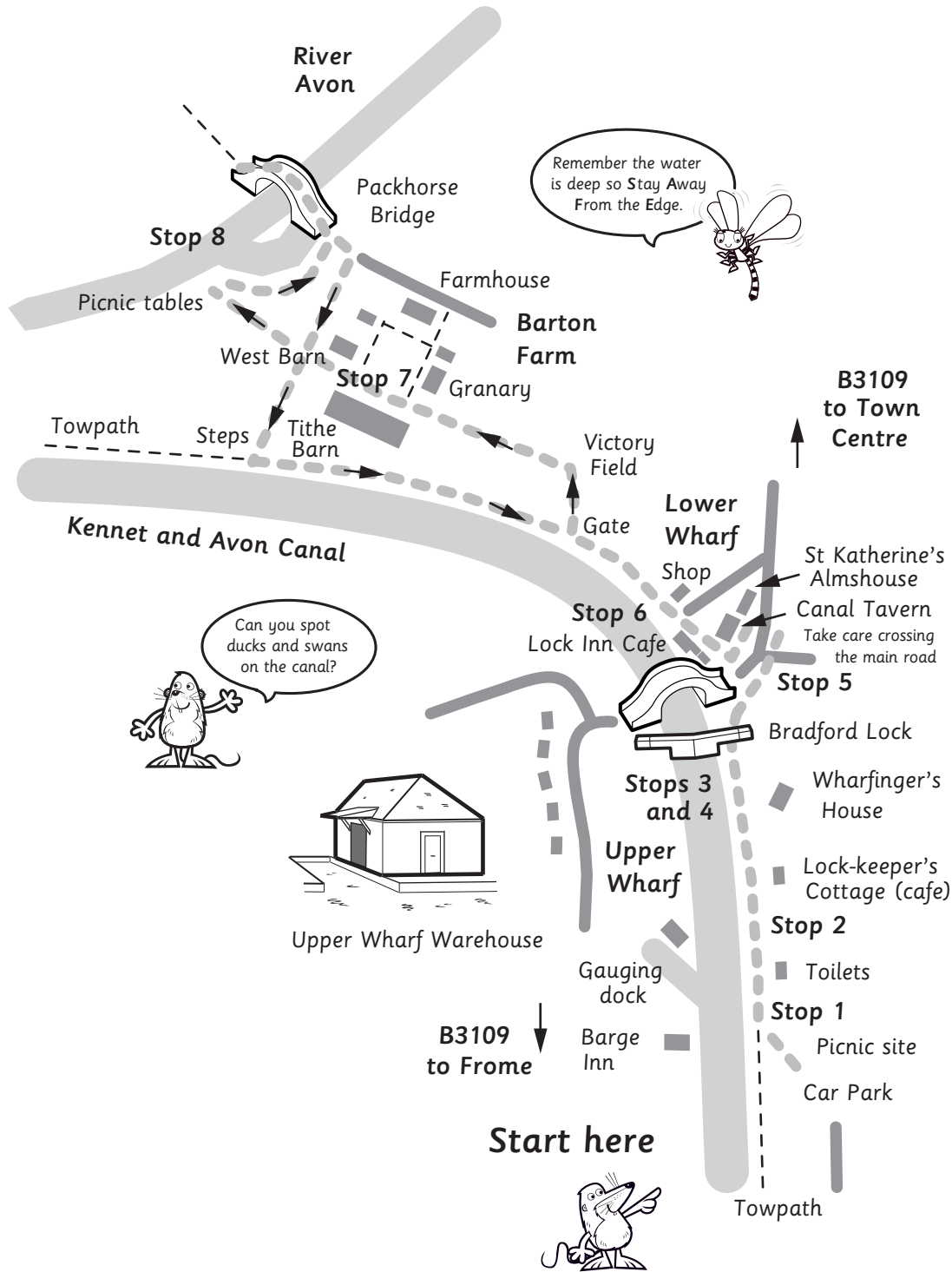


Bradford on Avon Trail

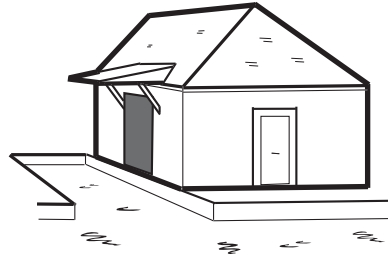
Kennet and Avon Canal



www.wow4water.net

Stop 1: The Upper Wharf Warehouse

Construction of the Upper Wharf began in 1794. Coal, stone and timber were unloaded here, while grain and local cheeses were shipped out to Bath and Bristol.



Can you spot:

The wooden canopy beneath which goods were unloaded?

Canal tolls were based on the **weight** of cargoes. In the gauging dock, half ton stone blocks were winched onboard while a clerk recorded how high the boat floated above the water.

On later trips, toll collectors calculated the weight of cargo by comparing how high the boat was floating with its gauging record.

Why is the canal wider at this point? _____

Stop 2: Lock-keeper's Cottage



The tea room used to be the home of the lock-keeper. In Victorian times, he would have lived in this small cottage with his wife and 7 or 8 children.

How many windows face the canal? ____

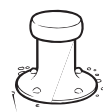
What was used to build it? _____

The tea room and shop is operated by the Kennet & Avon Canal Trust. The Trust's trip boat is usually moored outside the shop.

What is the name of the trip boat? _____

Can you spot:

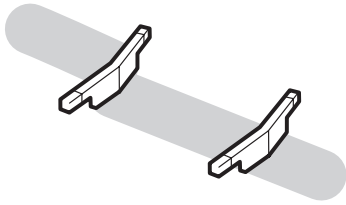
Bollards so boats can tie up alongside?



The interpretation board (to the right of the shop)?

Stop 3: Bradford on Avon Lock

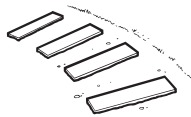
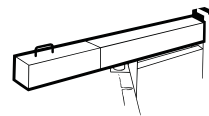
Walk to the lock and watch the boats passing through.
Keep **SAFE!** Remember to **Stay Away From the Edge.**



The lock acts like a giant staircase. Boats coming from Bath can climb from the level of the Lower Wharf up to the Upper Wharf.

Can you spot:

The balance beams on the lock gates?



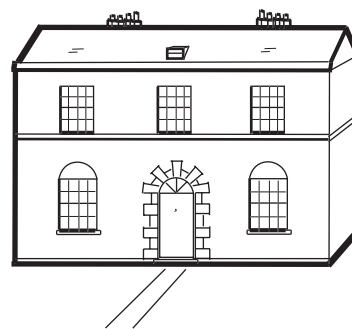
The footholds (which make it easier to push the lock gates open)?

The large stone blocks on the other side of the lock?
(These are original weights used at the gauging dock)

Stop 4: Wharfinger's House

Turn round and look at the house.

The Wharfinger was an important person - he was in charge of the wharf - so he had an impressive house!



Is the house larger or smaller than the lock-keeper's cottage? _____

How many windows face the canal? _____

Are the windows larger or smaller than those on the lock-keeper's cottage? _____

Can you spot:

The ornate door and its surround?

The attractive garden gate and stone wall?

Stop 5: Canal Tavern & St Katherine's Almshouse

Turn right at Frome Road, cross the side road, and stop where the path is wider, opposite St Katherine's Almshouse.



The almshouse was built to provide accommodation for poor and elderly women.

How many houses are there?

The Canal Tavern was once part of the almshouse. When the canal was built in the 1790s the level of the road was raised.

Can you spot where the main road is now above the level of the ground floor window of the building?

This led to flooding of the almshouse building, so the canal company was asked to build a new one. They never did!

Stop 6: The Lower Wharf

Take care when crossing the main road! Then walk along the path between the Canal Tavern & the Lock Inn Cafe.

The building on the left was owned by the canal company. The tables and umbrellas now line the old Lower Wharf.

Can you spot:

The mooring bollards along the old stone-sided wharf?

The horse-drawn passenger boat to Bath left from here between 1833 and 1857.

Why did the passenger service stop in 1857? _____

The shop on the right was an old warehouse.

Can you spot:

The large wooden doors where goods were hoisted to the top floor?



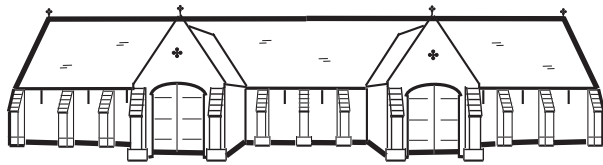
Stop 7: Tithe Barn, Barton Grange Farm

After 150 metres, turn right into Victory Field. Cross to the right of the children's playground to a gap in the wall.

This area used to be the Pound where stray animals were kept.

Cross the next field and go into the yard of Barton Farm.

The farm belonged to Shaftesbury Abbey. The tithe barn was built to store crops given to the abbey by farmers in payment of their rent. (A 'tithe' = a tenth of the produce)



Can you spot: The old wooden doors?

The wooden beams supporting the stone roof?

How were the planks forming the doors held together? _____

Stop 8: Medieval Packhorse Bridge

Continue through the stone archway and cross the grass to the picnic tables overlooking the River Avon.

The bridge was built in the 14th century to enable pack horses to reach the tithe barn.



Why is the bridge too narrow for cars? _____

Walk to the bridge and cross over it.

Can you spot:

The 'V' shape of the arches on the upstream side?

Why are the arches v-shaped? _____

Walk along the path to the right of the tithe barn. Turn left after the steps & follow the path back to the Upper Wharf.

Find the answers and lots of fun things on the WOW website at www.wow4water.net/nc_resource/bradfordanswers.pdf